

City of
PRINCETON
Minnesota



CITY OF PRINCETON, MINNESOTA
NOVEMBER 2023

ACKNOWLEDGMENTS

The planning team would like to thank the community members who participated throughout the planning process. The feedback was valuable and insightful. We would like to acknowledge the hard work of city staff and stakeholders for providing insights, feedback and issues facing the City's parks and trail system. These conversations have enriched our understanding of the community of Princeton and its visionary goals for the future relating to its parks and recreation.

MAYOR AND CITY COUNCIL

Thom Walker, Mayor
Jack Edmuns, Councilor
Jenny Gerold, Councilor
Victoria Hallin, Councilor
Jeff Reynolds, Councilor

CITY STAFF

Michelle McPherson, City Administrator
Bob Gerold, Public Works Director
Stacy Marquardt, Community Development - Planner

PARKS AND RECREATION ADVISORY BOARD

Jill Papesh
Elisabeth Burd
Carla Vita
Robert Peters
Aaron Gruber
Travis Koenen

COMMUNITY MEMBERS

A special thank you to the many community members who engaged in planning throughout this process at events, meetings, and online!



TABLE OF CONTENTS

SECTION 1: EXECUTIVE SUMMARY.....X
SECTION 2: ASSESSMENT OF NEED.....X
SECTION 3: VISION PLAN.....X
SECTION 4: PARK SYSTEM PLAN.....X
SECTION 5: IMPLEMENTATION PLAN..... X
APPENDIX..... X



SECTION 1: EXECUTIVE SUMMARY

INTRODUCTION

The City of Princeton is city located in Mille Lacs and Sherburne counties with a beautiful park system including eight community parks offering various recreational activities. Most parks are within a 10 minute walking distance for a majority of residents contributing to the overall health, wellness, viability for the community.

Princeton's Park System Plan is a strategic and comprehensive plan that provides an overall community vision for the parks, connections, and recreation for the next 10+ years.

This system plan is meant to provide recommendations that will guide future investments for development and improvements by establishing goals, policies and objectives.

PLANNING PROCESS

The planning process began with a project start-up meeting with city staff to explore goals, objectives and gather important city data. A critical piece of this plan was community engagement which was used to raise awareness of the project, understand the viewpoints of the residents and ensure the plan aligned with community sentiment and identified needs. At this stage, input was solicited through an interactive online engagement platform and survey mailings.

Data collection and system evaluations were conducted to understand the existing quality and condition of the parks, trails and recreation within Princeton.

The findings and analysis from the engagement and data collection process provided guidance to the development of preliminary recommendations and concept plans throughout the system master plan process.



PRIMARY GOALS AND INITIATIVES

The following goals and initiatives were prepared as a guide for establishing both short and long term priorities for the parks and recreation programs to better meet the needs and desires of the community over the next 10+ years.

1. Strengthen connections within and beyond the community
2. Create spaces to gather, interact, recreate
3. Improve safety and accessibility
4. Sustain fiscal & environmental responsibility

FINDINGS

Common themes that evolved from the planning process engagement include:

1. General Improvements to all park equipment and recreational activities
2. Desire for improved safety and accessibility, especially those relating to playground spaces
3. Provide recreation opportunities for older kids
4. Enhance connectivity and expand trail network
5. Create a higher level of awareness regarding the parks and amenities
6. Need for flexible and unique spaces
7. Sustainability and fiscal responsibility are important

SUMMARY OF RECOMMENDATIONS

The following summary of recommendations include both short and long term initiatives for the next 10+ years to meet the goals of the community and are not identified in any particular order of priority shown.

- 1.
- 2.
- 3.
- 4.
- 5.

REPORT ORGANIZATION

The plan is organized into sections that cover various aspects of the system plan and is meant to provide information and findings for both broad general visioning (i.e.: general policies, strategic decision-making, setting priorities, and budget allocations) as well as day-to-day use by staff and those that will be implementing the plan to ensure a high level of consistency in interpretation.

The system plan is organized by the following sections:

Section 1: Executive Summary

Section 2: Assessment of Need

Section 3: Visioning Plan

Section 4: Parks Plan

Section 5: Implementation Plan

HOW TO USE THE PLAN

This plan is meant to be used a guide for the next 10+ years. It is intended to be a living document with recommendations, standards and guidelines for system planning for park and trail development.

The plan should be reviewed, revised and implemented according to City Council and the Park and Recreation Advisory Committee recommendations and approval. Recommendations within this document will require more analysis and planning prior to implementation.

It is recommended that the plan be reviewed by staff annually and updated comprehensively every ten years, due to the fact that economic conditions, funding opportunities and partnerships, community needs and desires change over time.

Use the plan as a guide and continue extensive community engagement for park and trail planning.



SECTION 2: ASSESSMENT OF NEED

INTRODUCTION

Assessing the needs of the community is a critical first step in developing a park system master plan because it represents those who it is intended to serve. The City of Princeton connects with its community members to ensure the residents feel they are being heard and this planning process built upon the successes of the past to further gather input from the community.

This park system master plan reflects the needs of the community at the time it was written, in conjunction with the goals.

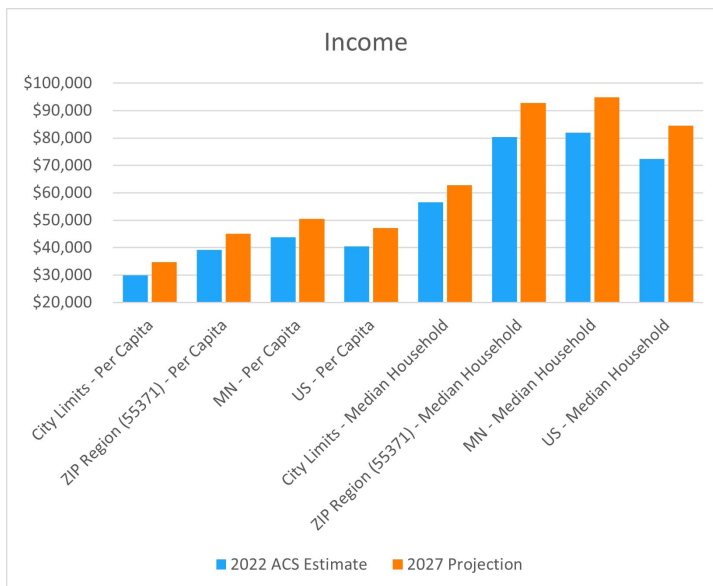
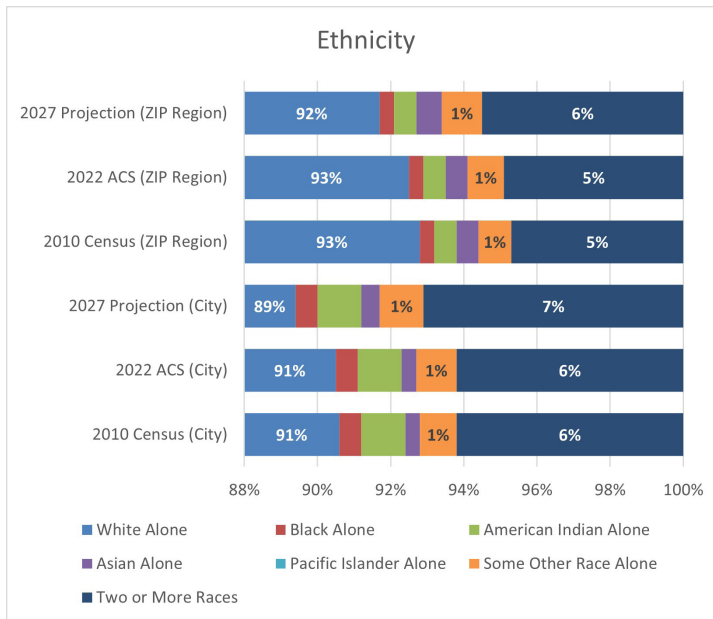
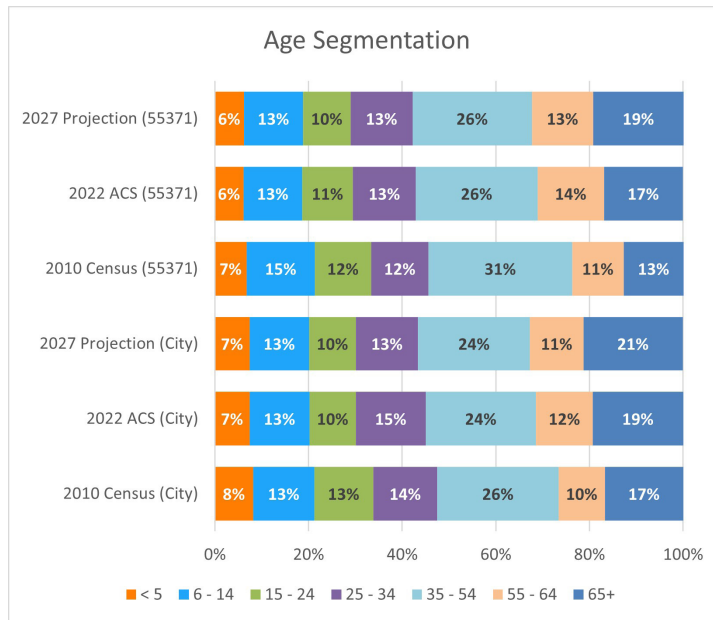
DEMOGRAPHICS

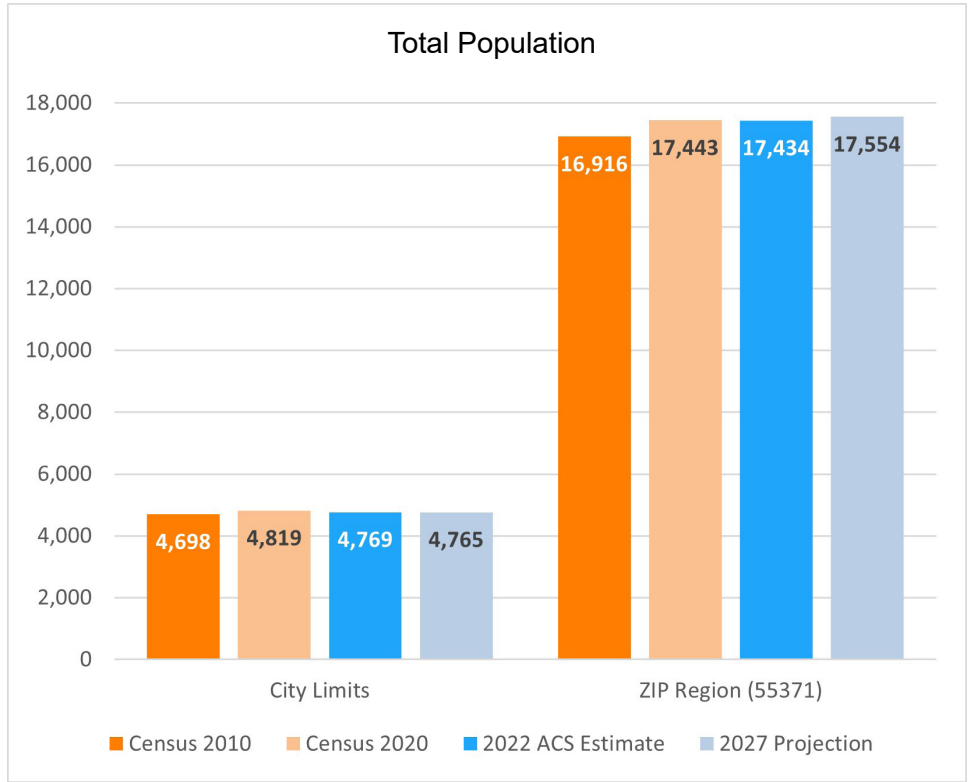
According to demographic data, the City of Princeton is expected to sustain its population.

The total population in Princeton according to the 2020 census was 4,819 people. The 2022 ACS (American Community Survey) Estimate is 4,769 people. Princeton is predicted to decrease by 4 people from 2022 to 2025.

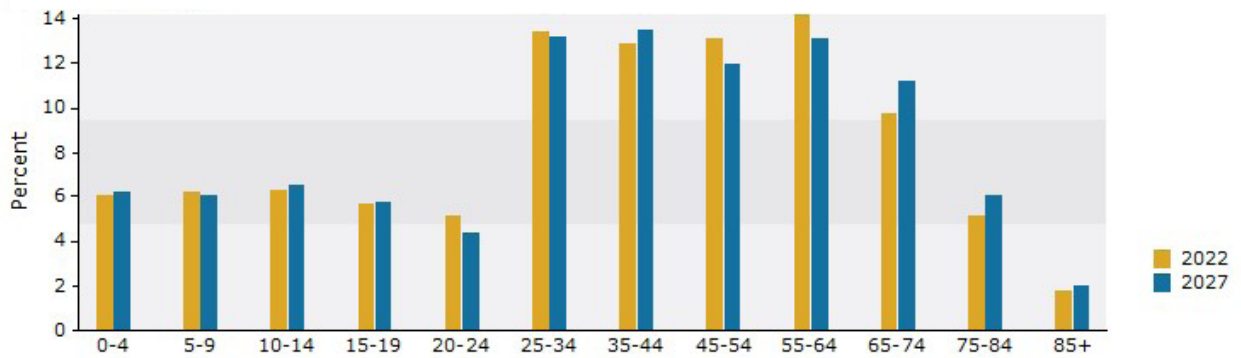
90.6% of the total population is white and 52.3% of the total population is female.

It is important that park systems and all populations, ages and incomes have access to high quality park and open spaces within a city.





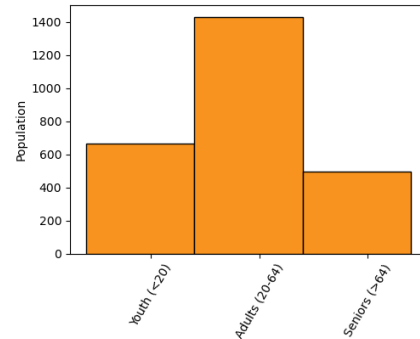
Princeton Population by Age



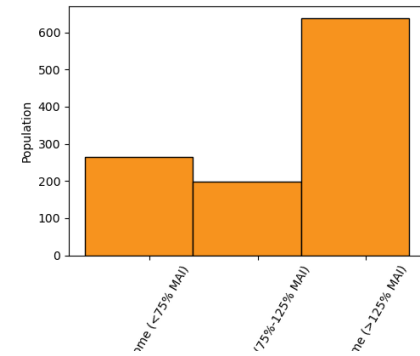
POPULATION SERVED BY PARKS WITHIN 10 MINUTE WALK OF THEIR RESIDENCE

Population	Within a 10-minute walk
Total Population	2,593

Age	Within a 10-minute walk
Children (less than age 20)	667
Adults (age 20 to age 64)	1,430
Seniors (age 65 and up)	497

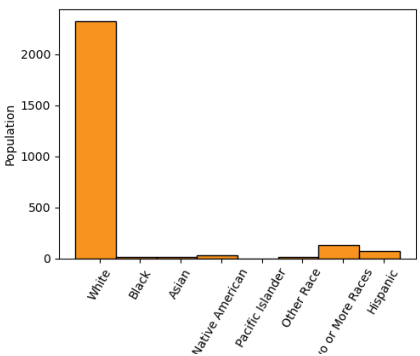


Households by Income	Within a 10-minute walk
Low income	265
Middle income	197
High income	638



(Generated from urban area median income)

Race/Ethnicity	Within a 10-minute walk
White*	2,322
Black*	16
Asian*	12
Native American*	29
Pacific Islander*	0
Other Race*	12
Two or More Races*	130
Hispanic	72



* Excludes those that report Hispanic origin (which is captured separately from race by the U.S. Census)

Demographic information is derived from ESRI 2022 Demographic Forecast Block Groups data.

This report was created on November 20, 2023 using the ParkServe® interactive mapping site. It is for informational purposes only. The providers of this report disclaim any and all warranties, express or implied, including fitness for a particular purpose or merchantability, and make no representation that the report is complete, accurate, or error free. Use and reliance on this report is at the sole risk of the party using same.
© 2023 Trust for Public Land.

NON-CITY RECREATION AND SCHOOLS

SCHOOLS IN PRINCETON

Princeton High School

Amenities: 10 Tennis Courts, 2 Soccer Fields, Baseball Field, Track,
Football Field, Multi-Purpose Field

Princeton Middle School

Amenities: Playgrounds, 5 Soccer Fields, Multi-Purpose Field

Princeton Intermediate School

Amenities: Playground

Princeton Primary School

CHURCHES IN PRINCETON

Christ Our Light Catholic Church

Amenities: Playground

Freshwater United Methodist Church

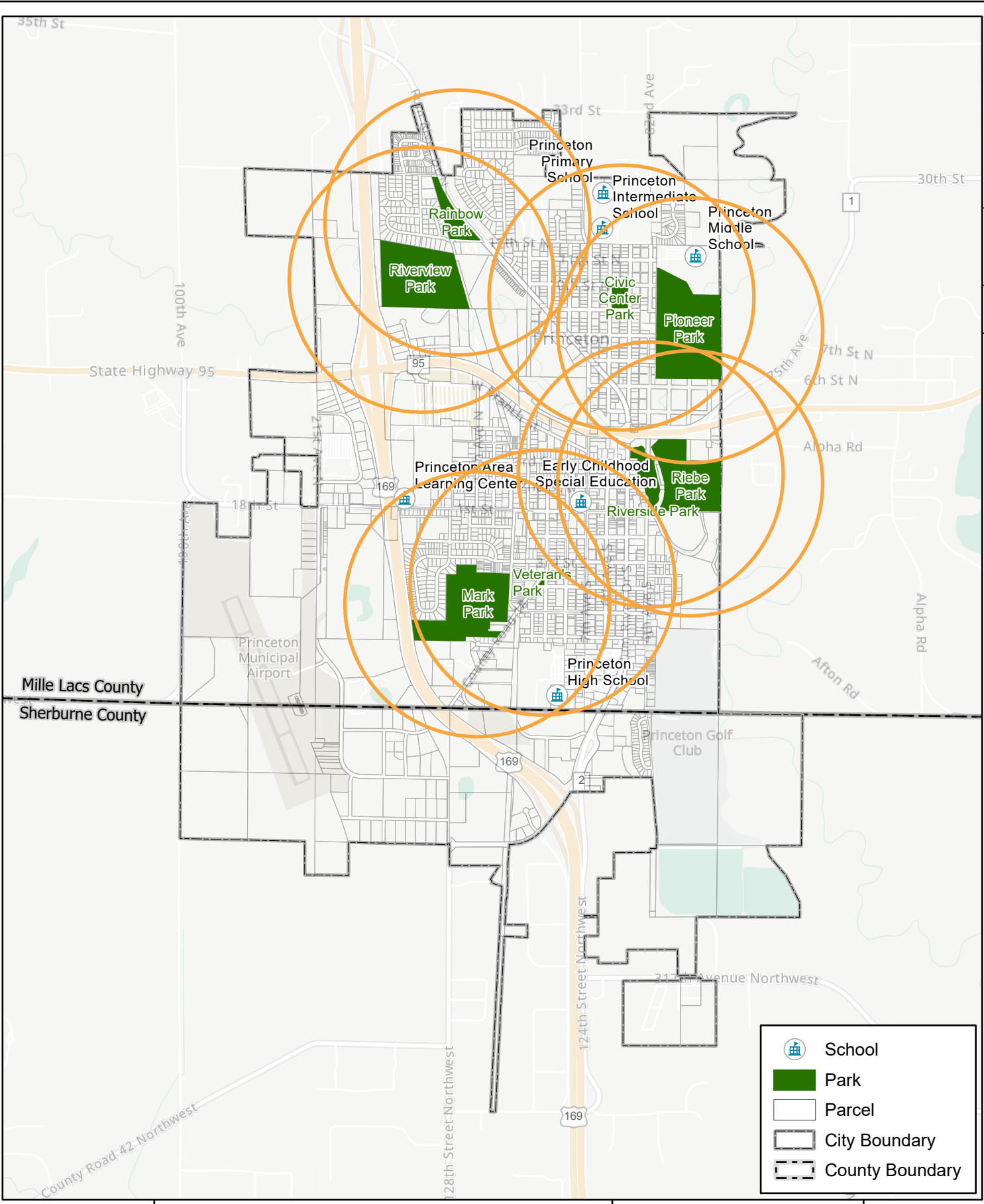
Amenities: Playground

Free Grace United Church

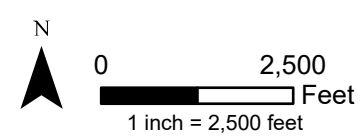
Amenities: Playground

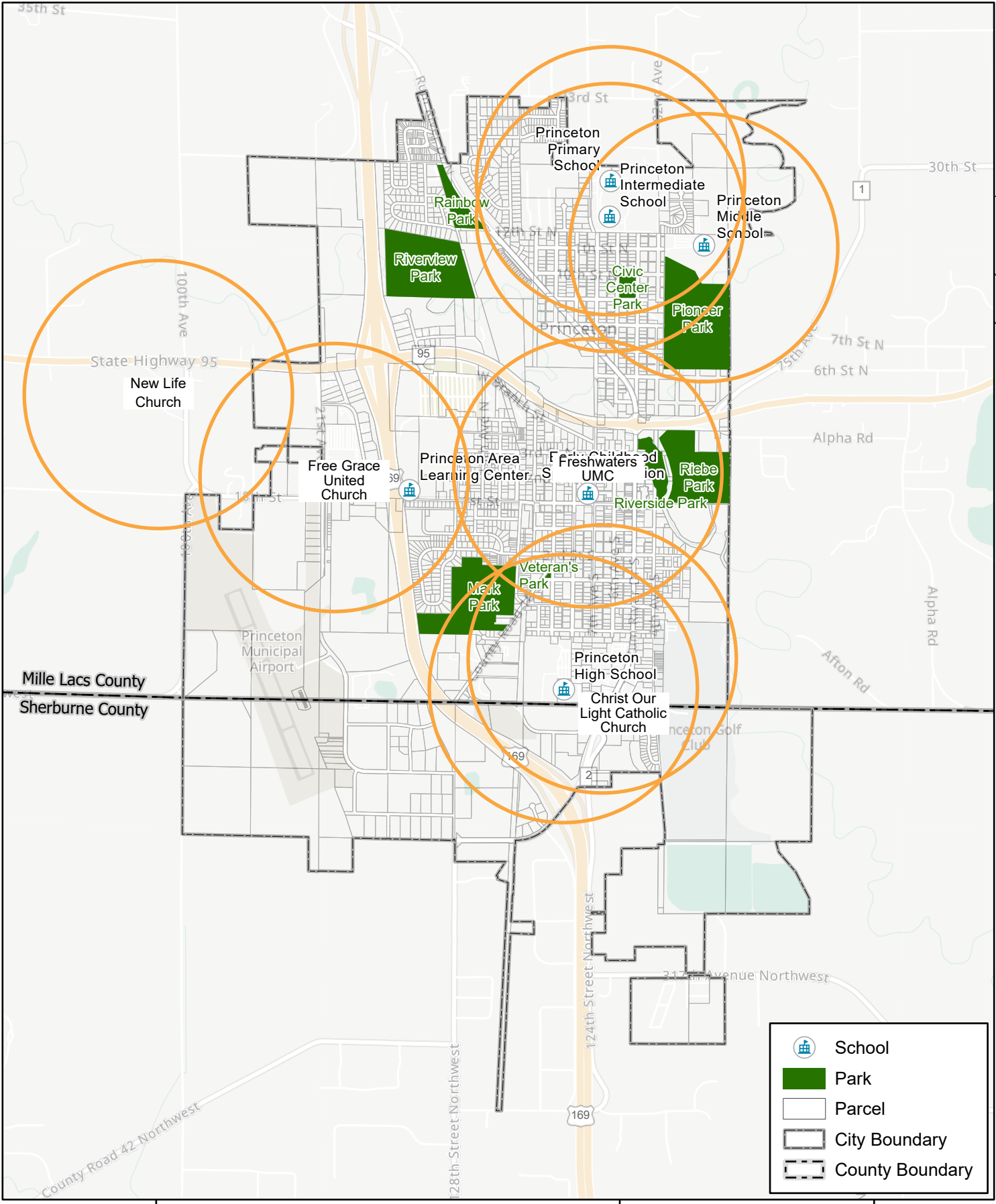
New Life Church

Amenities: Playground



Park Locations
 Parks Master Plan
 WSB No. 022390-000

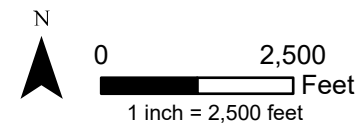


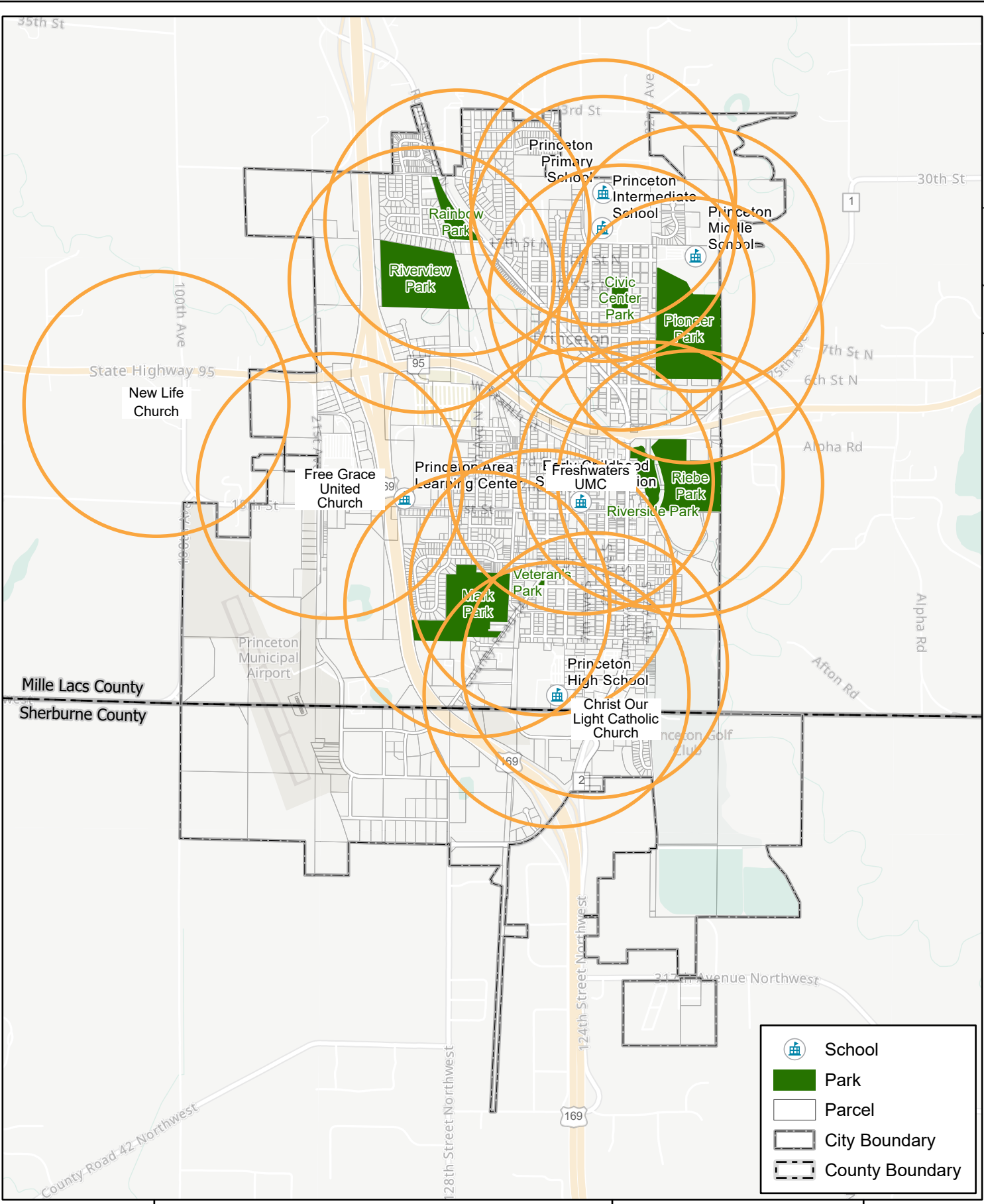


	School
	Park
	Parcel
	City Boundary
	County Boundary



Park Locations
 Parks Master Plan
 WSB No. 022390-000

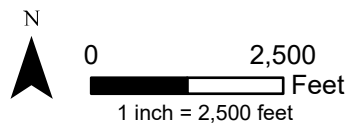


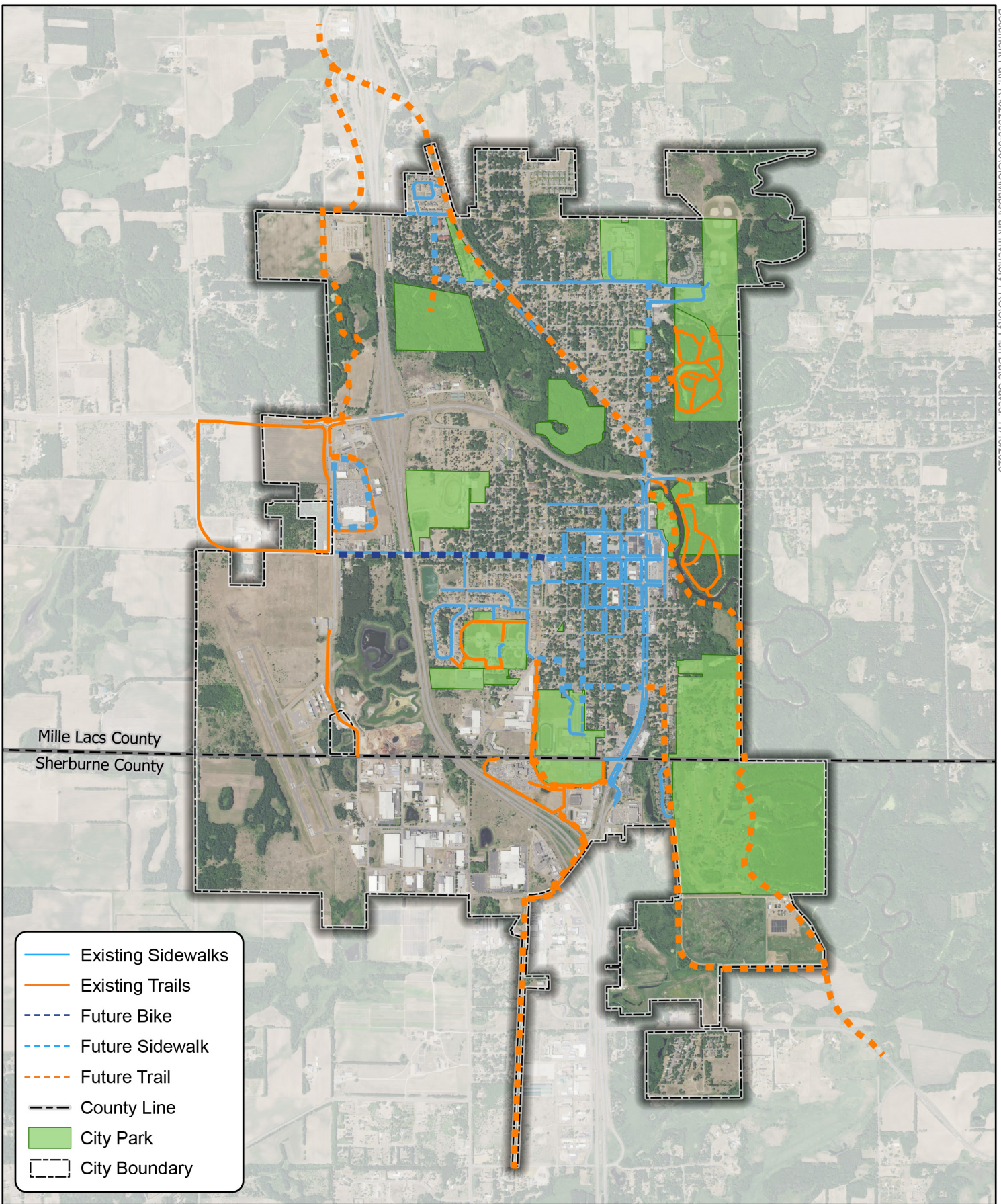


	School
	Park
	Parcel
	City Boundary
	County Boundary



Park Locations
 Parks Master Plan
 WSB No. 022390-000





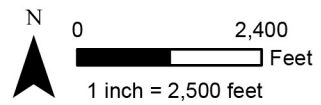
Mille Lacs County
Sherburne County

- Existing Sidewalks
- Existing Trails
- - - Future Bike
- - - Future Sidewalk
- - - Future Trail
- - - County Line
- City Park
- - - City Boundary



Princeton Comprehensive Plan

City Park and Trails Map
Princeton, MN



COMPARISON TO RECREATION STANDARDS

NATIONAL COMPARISON

The NRPA (National Recreation and Park Association) publishes park amenity standards based upon municipalities across the nation of similar population size. It should be noted that this is only one method of comparison and each community's desires, needs and location should be considered when assessing park system amenities.

The table below shows a high-level comparison based upon NRPA standards and recommendations to similar communities.

Table X.X: Comparison to NRPA Standards			
Description	Provided by the Average Agency with less than 20,000 in population (Median - 2023 NRPA Report Park Metrics)	Provided within Princeton Park System	Assessment
Residents Per Park	1,225 residents per park	602 residents per park	Exceeds Average / Standard
Acres of park land per 1,000 residents	13.0 per 1,000 residents	23.9 acres per 1,000 residents	Exceeds Average / Standard
Playgrounds	1 per 2,014 residents	1 per 964 residents	Exceeds Average / Standard
Basketball Courts	1 per 3,729 residents	1 per 2,409 residents	Exceeds Average / Standard
Baseball Fields (youth)	1 per 3,114 residents	1 per 2,409 residents	Exceeds Average / Standard
Softball Fields (youth)	1 per 5,079 residents	1 per 1,60 residents	Exceeds Average / Standard
Multi-Purpose Fields	1 per 3,859 residents	0 per 4,819 residents	Deficient of Standard
Outdoor Ice Rink	1 per 8,045 residents	1 per 4,819 residents	Exceeds Average / Standard
Pickleball	1 per 3,252 residents	1 per 2,409 residents	Exceeds Average / Standard



INDIVIDUAL PARK ASSESSMENTS

As recreational trends and use patterns change, the need arises to evaluate whether certain recreation amenities are appropriate in each park. Overall, parks with higher service levels and better trail access, design and character tend to have a higher use by the community.

By assessing and ranking each park, combined with input from community engagement efforts and system planning goals/vision, this informs recommendations for improvements to both individual park properties and the overall system network of parks.

Each individual park within Princeton was visited and evaluated to determine how well the park serves the needs of its residents based on overall site design, maintenance, natural resources, overall character and amenities. The scores were tabulated and averaged, resulting in an overall park ranking. While most parks provide adequate recreational amenities, other parks have aging equipment or do not function effectively. These parks are recommended to be re-designed over time to increase usability of the public space.

PARK AMENITIES WERE ANALYZED BASED ON THE FOLLOWING CRITERIA:

- » Condition - What is the condition of the equipment or surfacing? Is it rusting, broken or not functioning properly?
- » Design - Does the amenity have proper orientation? Are there safe and effective circulation patterns?
- » Accessibility (ADA) - Is there an accessible route to amenities? Is there an accessible parking stall with signage and striping? Are accessible furnishings available?
- » Age - How old is the equipment or surfacing? Does it need to be replaced?

Number	Park Name	Classification	Acreage	Ranking
1	Mark Park	Community Park	32.0	51%
2	Civic Center Park	Neighborhood Park	3.0	50%
3	Pioneer Park	Community Park	40.0	53%
4	Rainbow Park	Neighborhood Park	6.0	55%
5	Riverside Park	Community Park	5.0	56%
6	Riebe Park	Community Park	20.0	67%
7	Veteran's (Triangle) Park	Neighborhood Park	0.3	50%
8	Riverview Park	Community Park	16.0	NA

Total Acreage	122.3	
Average Ranking		55%

Exceptional - Exceeding Service Level, High Quality, Newer in age
Good - Meets or Exceeds Expected Service Level, Mid to Newer Range in Age
Adequate - Meets Basic Service Level, Mid-Older range in age
Poor - Not Meeting Service Level, Older in age/ outdated

75% +
61% - 75%
41% - 60%
< 40%

ACCESSIBILITY AT PARKS

A number of parks in Princeton were developed prior to current ADA standards for parks and recreation. When making improvements to these parks, the city should ensure that the park site is updated to meet the current requirements.

It is recommended to enlist the services of a design professional when improving parks to ensure that improvements desired will meet current state and federal ADA standards.

Action Items for Improving Accessibility at Developed Parks:

- » Provide an accessible route from an ADA parking stall to each park amenity (shelter, playground, court, etc).
- » Parking lots are required to have a minimum number of accessible stalls (including van accessible stalls) dependent on the total number of stalls provided in the lot.
- » Accessible routes (trails and sidewalks) have a maximum 1:20 running slope and a maximum 1:48 cross slope. There are also standards on width, surfaces, landings and passing zones. No obstacles over 1/2" height are allowed on accessible routes.
- » Connections from streets to the park may require pedestrian curb ramps with truncated domes.
- » Parking lot access aisles and stalls have a maximum grade of 1:48, with an accessible route without barriers or obstructions provided to the park from the accessible stalls.
- » A certain percentage of park site amenities must be also accessible, this includes drinking fountains, grills, tables and benches.
- » Standards, guidelines and exceptions may change. Before making improvements, verify with Minnesota's Accessibility Code, available online, and verify with local codes which may have differing requirements.

COMMUNITY ENGAGEMENT

The parks are for the community, therefore community engagement is crucial in order to learn what the community desires, what's working, what's not working and what could the city do to improve its parks and trails. A community engagement process was undertaken as part of the park system plan. The public engagement method primarily included online engagement, interactions with park users at 3 pop-up events and stakeholder interviews for decision making throughout the planning process. Valuable and specific feedback was gained and overall themes emerged which supported the recommendations in this plan.

ONLINE ENGAGEMENT MAP & SURVEY

An online map, Social Pinpoint, was utilized to reach a broader audience. The city promoted the site through the pop-up events, a utility mailing, and through city social media channels. Over ___ survey responses were recorded from Social Pinpoint visits. The results are included in the Appendix.

STAKEHOLDER INTERVIEWS

Stakeholder interviews were conducted with members of the school district, Baseball programs, age friendly and the Princeton Chamber.

SUMMARY OF ENGAGEMENT

Based on survey results, the community of Princeton believes the biggest benefits of Princeton parks are that they provide positive social interactions in the household and provide age-friendly and accessible spaces for all age groups. Currently, the most used park elements are multi-purpose trails, playgrounds, and picnic shelters. A number of residents were unaware that a few of the parks in the city existed including Riverview, Reibe, and Veteran's parks. There is a desire to improve the parks through amenities such as trails and a natural playground with a special focus on elements for older kids and adults such as a ninja warrior course, basketball court, skate park, swimming pool, archery range, and hockey rink. Residents think that the existing dog park could be moved to a better location, away from the flood plain. Engagement showed that routine maintenance of parks and keeping them clean is important to the community, along with providing information about each park online. Overall people seem satisfied with the current state of the parks, but believe improvements should be made.





EMERGING THEMES

PLACES FOR PLAY

*Play nodes and unique play features
More inclusive and creative play
Opportunities for all ages*

SAFETY

*Pedestrian connections
Improving accessibility throughout park and trail system*

DESIRES

*Increased accessibility within parks
Water play
Dog park improvement or relocation
Skate Park
Court improvements*

*Wayfinding and signage
Updated playground equipment
Nature Play opportunities
Walking and seating areas*

PARK & REC TRENDS

Over the past decade, there have been significant changes in recreational trends in Minnesota and nationwide. Trail loops and walking within parks and natural areas are always at the top of the use list. Sports such as baseball and football are seeing decreased participation rates; other field sports such as soccer, lacrosse and rugby have been increasing in participation. Multi-use fields and open space have increased in park value to its communities.

Other trends include ninja warrior and fitness courses for older youth and adults (both indoor and outdoor) and there is a nationwide interest in pickleball, especially within the baby boomer generation. Gaga ball, bocce ball and lawn games are rising in popularity amongst the young and old. Splash pads have become a common alternative to the wading pools of the past and don't require city staff (lifeguards) to monitor the safety of users.

There are multiple options for creative and unique play areas including nets, spinning, water play and natural play areas. Park and trail users have also shown an interest in dog parks and bringing their dog companions to parks, events and programmed activities.



Play Net

- » Dog Parks
- » Pickleball
- » Gaga Ball
- » Bocce Ball and Lawn Games
- » Challenge Courses (Ninja Warrior)
- » Bankshot (basketball)
- » Nature Play Areas
- » Splash Pads
- » Paved Trails & Trail Loops
- » Mobile Bike and Scooter Rentals (companies such as Byrd, Nice Rice) docked & dock-less
- » Community Gardens and Raised Planting Beds for Accessibility and Senior Citizens /
- » Public Art
- » Use of Drones in Park Spaces
- » Esports
- » Unique Skate Parks
- » Disc Golf
- » Fat Tire Biking / Winter Biking
- » Synthetic Turf Fields
- » Pollinator Gardens

“
Any improvements
made to our park
system is an
improvement to our
”

Recreation Programming and Event Trends

- » Health & Fitness Programs including:
 - » Active Living Programs
 - » Outdoor Fitness Classes in Park
 - » Yoga (Dog, Cat, Goat) Classes
 - » Mommy & Child Fitness Classes
 - » Fitness during Pregnancy
 - » Family Fitness / Challenge Sports & Events (adventure races)
 - » Therapeutic Recreation (for healing, for baby boomers)
 - » HIIT cardio classes
- » Esports gaming competitions or combined with physical activity challenges
- » Life Sports (individual sports one can participate in throughout their life, for example, kayaking, biking, swimming)
- » Combining recreation with environmental education
- » Eco-gyms with power generating equipment
- » Generational Programming: Joint Programming with Seniors and Teens/Toddlers
- » Program partners with local businesses (e.g. 5K race) or non-profit and charity organizations,
- » Programs and event sponsorships by local businesses



Water Play



*Goat Yoga
Source: ATX Goat Yoga*



*Esports Gaming Competitions
Source: Houston Press*

“

We have a great river area that needs to be celebrated!

”

PARK & REC TRENDS

Demographic Trends Affecting Recreation Nationwide

Accessibility: Populations are aging and in need of accessible facilities. In general, accessibility is a trend that relates not only to people with disabilities, but younger generations (think: stroller maneuvering), older generations (think: walking with a cane, poor eyesight).

Active Living: Populations, old and young, value active living and access to fitness and trails for exercise. Connected and well-designed trails enable residents to access other parts of the city, possibly limiting vehicle trips. The growing popularity of active seniors means providing appropriate recreational programming, planned trips and opportunities to socialize in park and programmed spaces.

Convenience: Another concern affecting recreation departments nationwide is barriers to access park programming. Many families today have working-parents and cannot attend during a typical workday with their children. Similarly, seniors are working longer too. Hosting programs during convenient times for people is important to consider as part of overall recreation offerings.

- » Lack of leisure time
- » Programs are not offered at convenient times for working adults
- » Multitude of opportunities for leisure competing with parks and trails recreation
- » Lack of transportation or parks aren't easily accessible to participants (safe sidewalk routes)
- » Concerns about safety in the parks
- » Cost of entry (fees) and costs for specialized equipment (ex: mountain bikes, camping gear)
- » Lack of awareness of programs, parks, trails available for public use
- » Language barriers

Source: Greater Minnesota Regional Parks and Trails Strategic Plan







SECTION 3: VISION PLANNING

INTRODUCTION

The vision for the Princeton System Plan builds upon the framework developed during the 2018 Franchise Fee Trail and Park Improvement Program. A vision is a set of goals and policies defining high level statements that will help achieve an overall vision statement and are meant to guide decision-making processes for future development and priorities.

The vision identified goals and relative policies relating to parks, trails, and open spaces, including:

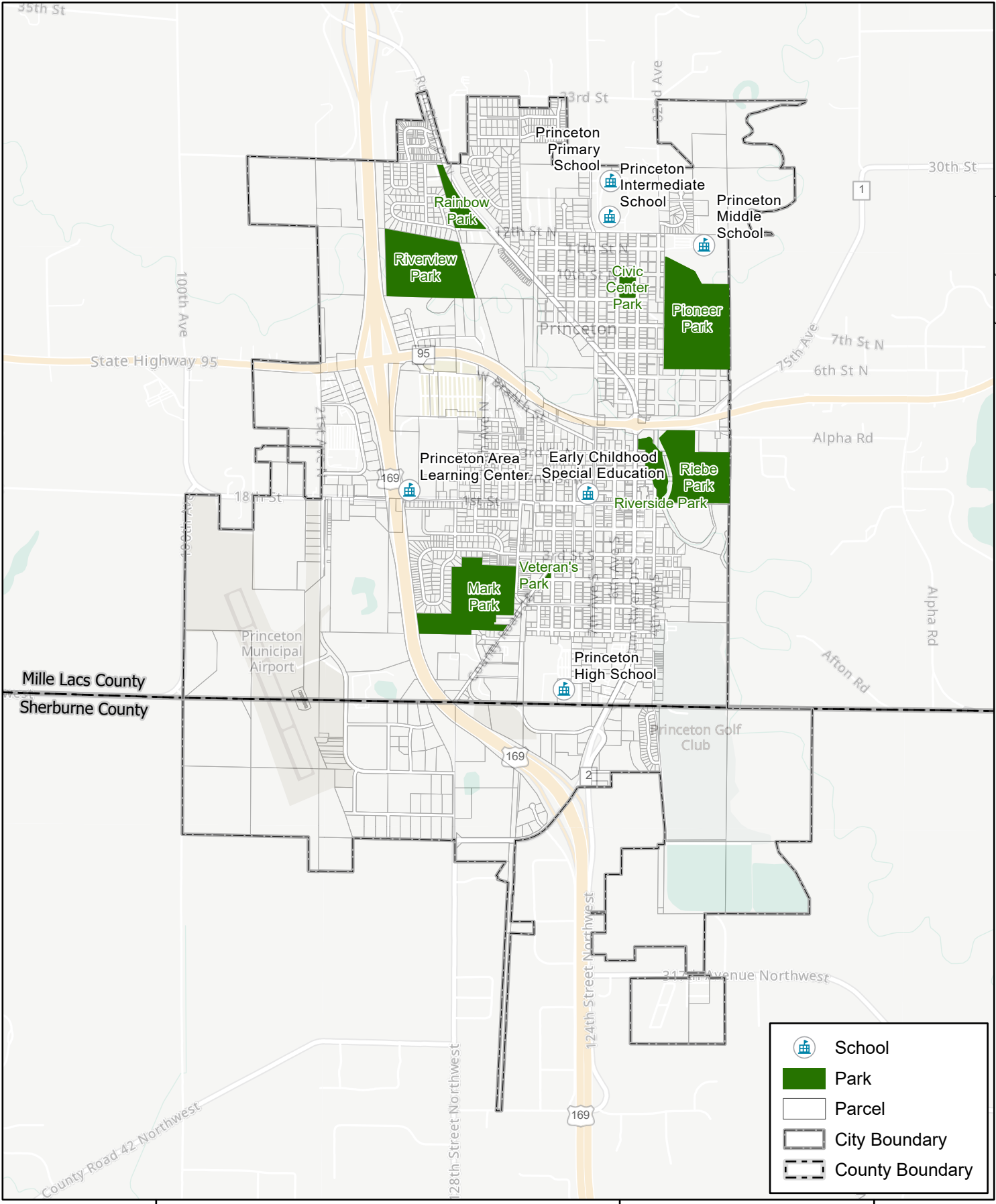
1. Plan, maintain, and update a diverse variety of recreational and outdoor opportunities throughout the Park and Trail System.
2. Provide a safe and convenient trail and sidewalk system throughout the community that provides links between destinations within the community, such as parks, schools, recreational facilities, and businesses, as well as to neighboring communities.
3. Increase usage and awareness through promotion and marketing of the Park and Trail system.



SECTION 4: PARK SYSTEM PLAN

OVERVIEW

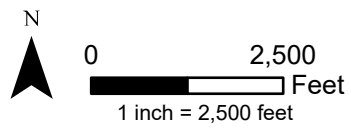
The City of Princeton has a total of 8 parks and open spaces. Refer to Existing Parks Map.



	School
	Park
	Parcel
	City Boundary
	County Boundary



Park Locations
 Parks Master Plan
 WSB No. 022390-000



CIVIC CENTER PARK

Classification

Size

3 acres

Location

503 N 9th Street

Description

Amenities include a Civic Center building with kitchen and restrooms, playground, basketball court, pickleball court, ice skating rink and warming house, two horseshoe pits, tetherball all-purpose sports field, barbecues, and picnic tables

Proposed Improvements

- Upgraded Playground Equipment
- Add accessible trails/connections to all park elements

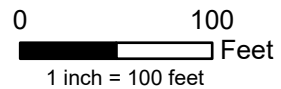


Playground



Civic Center Park

Parks Master Plan
WSB No. 022390-000



MARK PARK

Classification

Size

27 acres

Location

405 11th Ave S

Description

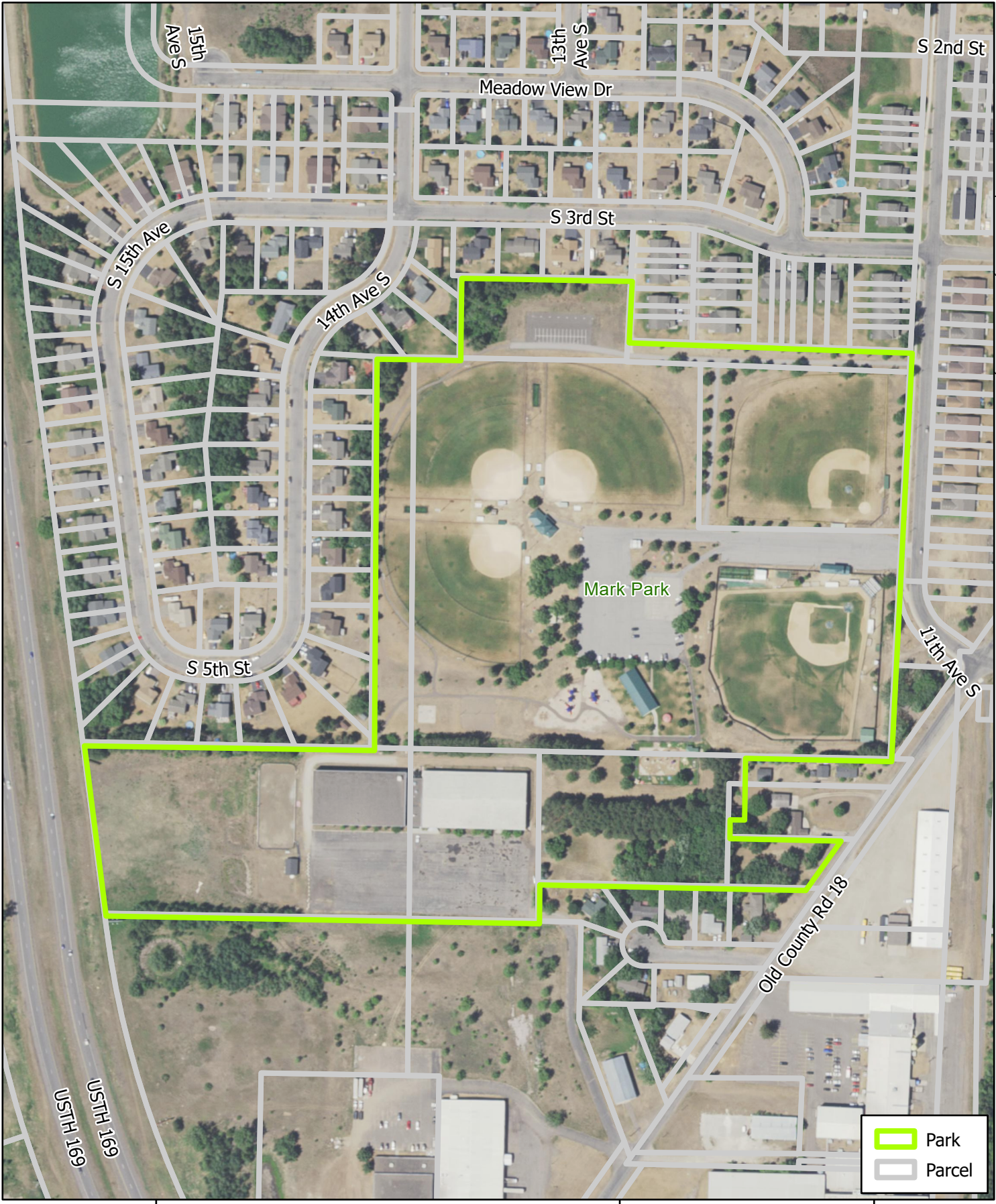
Amenities include Solheim Baseball Field (run by the Princeton Legion), one additional baseball field, three softball fields, Splash Pad/Splash Park, basketball, volleyball, playground, horseshoe pits, restrooms, three picnic shelters, picnic tables, barbecue area, walking trails

Proposed Improvements

- Add accessible trails/connections to all park elements -- including ballfield bleachers, play elements, picnic tables, and benches and all other park features.
- Repair/replace volleyball nets
- Add safety netting in ballfield areas
- Long term goal: Additional baseball field



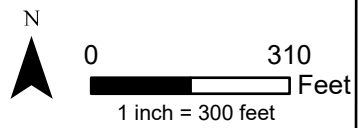
Splash Park



Park
 Parcel



Mark Park
 Parks Master Plan
 WSB No. 022390-000



PIONEER PARK

Classification

Size

40 acres

Location

Entrance one block East of 8th St N & 5th St N

Description

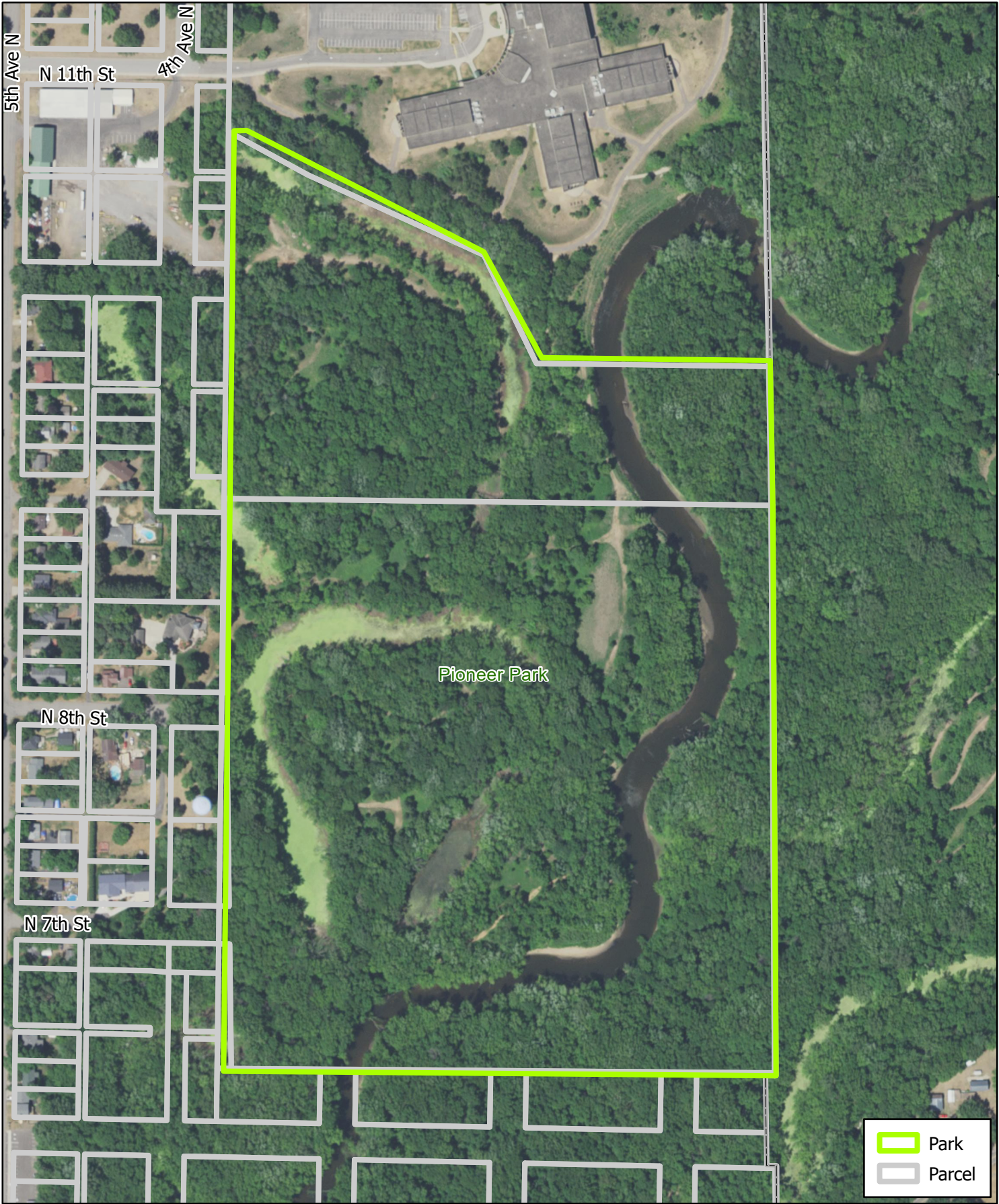
Amenities include natural hiking trails and cross country ski trails, exercise stations

Proposed Improvements

- Add accessible trails/connections in park
- Add maps and wayfinding signage
- Add benches throughout the park

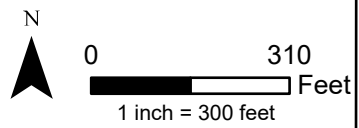


Bench



Pioneer Park

Parks Master Plan
WSB No. 022390-000



RAINBOW PARK

Classification

Size

6 acres

Location

Entrance at Rum River Dr N & 12th St N

Description

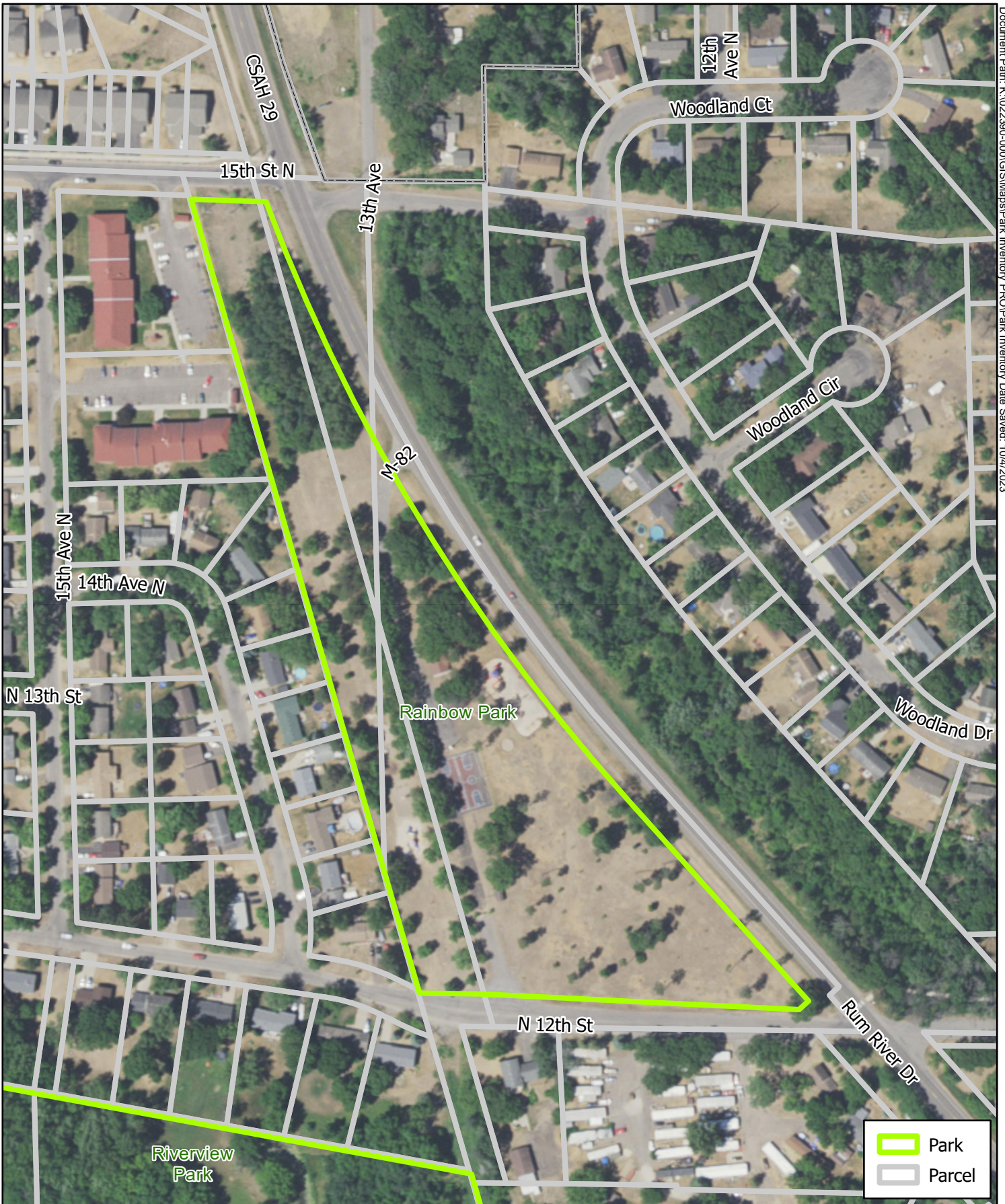
Amenities include a playground, two basketball courts, sand/gaga pit, picnic shelter, picnic tables, barbecue pit, fire pit, restful wooded area

Proposed Improvements

- Add accessible trails/connections to all park elements
- Repair/update Basketball courts
- Add bike racks
- Update Playground Facilities



Shelter



Rainbow Park

Parks Master Plan
WSB No. 022390-000



0 200
Feet
1 inch = 200 feet



RIEBE PARK

Classification

Size

27 acres

Location

203 4th St Circle N

Description

Amenities include primitive campsites, vault toilet, water fountain, picnic shelter, picnic tables, walking trails, fenced-in dog park, nine-hole disc golf course, campsites available to reserve, council fire ring, snowshoeing trails

Proposed Improvements

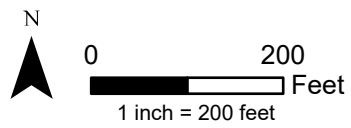
- Add accessible trails/connections to all park elements
- Expand/reconfigure dog park to include area for smaller dogs
- Add bike racks
- Add picnic tables
- Pave parking lot
- Add bridge connection to Riverside Park



Fire Pit



Riebe Park
 Parks Master Plan
 WSB No. 022390-000



RIVERSIDE PARK

Classification

Size

5 acres

Location

300 N Rum River Dr

Description

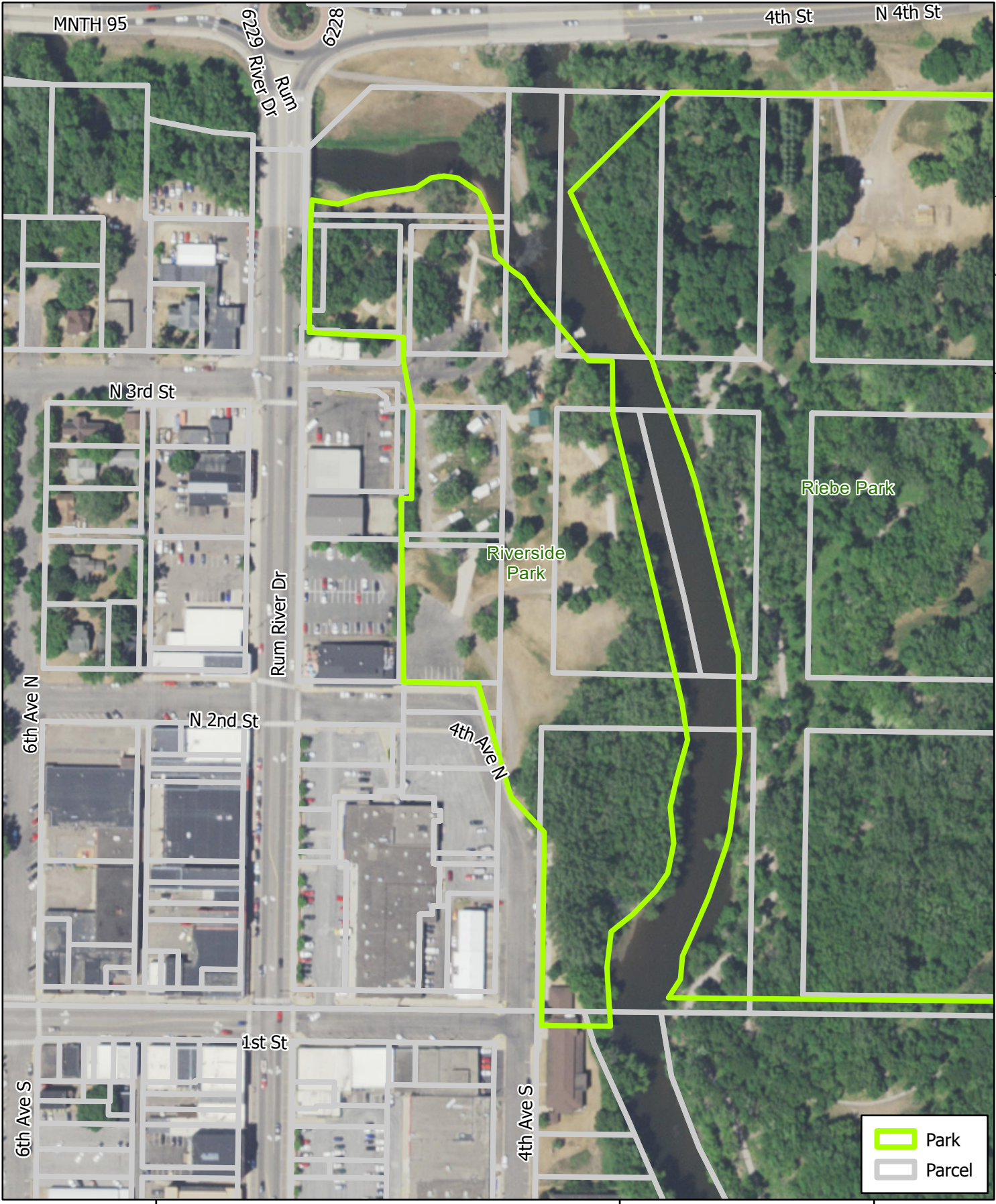
Amenities include campsites (with Electrical hook-ups), restrooms/showers, picnic shelter / picnic tables, barbeque, canoe/kayak launch, swimming beach area, big chair, walking trails, playground, fishing pier

Proposed Improvements

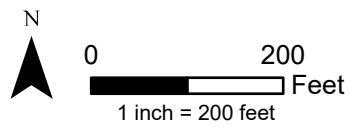
- Add accessible trails/connections to all park elements
- Improve boat landing area
- Add bridge connection to Riebe Park



Fishing Pier



Riverside Park
 Parks Master Plan
 WSB No. 022390-000



RIVERVIEW PARK

Classification

Size

16 acres

Location

Entrance at 12th St N & 15th Ave N

Description

Amenities include a nature preserve

Proposed Improvements

- Add accessible trails throughout park
- Improve signage
- Add picnic tables
- Add benches

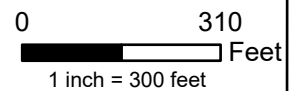


Park Sign



Riverview Park

Parks Master Plan
WSB No. 022390-000



VETERAN'S PARK

Classification

Size

.25 acres

Location

9th Ave S & 4th St S

Description

Amenities include picnic tables, benches, and barbeque

Proposed Improvements

- Add accessible trails/connections in park
- Upgrade benches and picnic tables

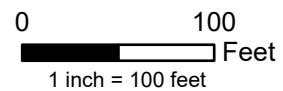


Park Swing



Veteran's Park

Parks Master Plan
 WSB No. 022390-000





SECTION 5: IMPLEMENTATION PLAN

DYNAMIC NATURE OF THE IMPLEMENTATION STRATEGY

The recommendations for implementation in this plan have been thoughtfully selected based upon city goals and objectives, community feedback and park planning expertise. However, the strategy shall remain dynamic and priorities will change over time due to community needs, population demographics, funding opportunities or constraints, economic outlook, as well as derived benefits from changes to parks and trails within Princeton.

The city shall review annually the implementation plan and use it as a guide for future priorities so that it remains in alignment with the community's needs and values.

PRIORITIZATION

Recommendations in this plan, at the time of development, have been prioritized based upon a number of factors including community feedback, existing conditions or issues, city goals and objectives along with park planning best practices.

APPENDIX

ONLINE ENGAGEMENT FINDINGS

SURVEY #1 - TWO TOTAL QUESTIONS

Q1. Which activity do you most commonly do within Princeton Parks?

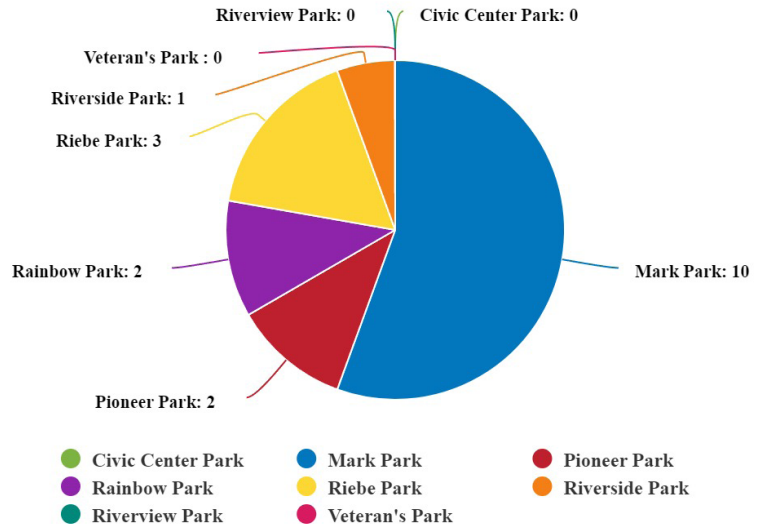
15 answers

Word Cloud **Response List**

RESPONSES

- Daily visits to the Dog Park
- Dog walking
- Kids play on the playgrounds.
- Light Up Princeton
- Mark Park, splash park, trails
- Playground
- Playground (accessible), walk
- Playgrounds
- Playgrounds, splash park, walks
- Play on playground equipment
- Splash park and playground
- Use the playgrounds and splash
- Walk
- Walk dogs, watch baseball
- Walk/hike or watch baseball.

Q2. Which Park do you visit most often?



SURVEY #2 - ELEVEN QUESTIONS

Q7. Which four (4) amenities or activities do you most commonly utilize/participate in within Princeton Parks?



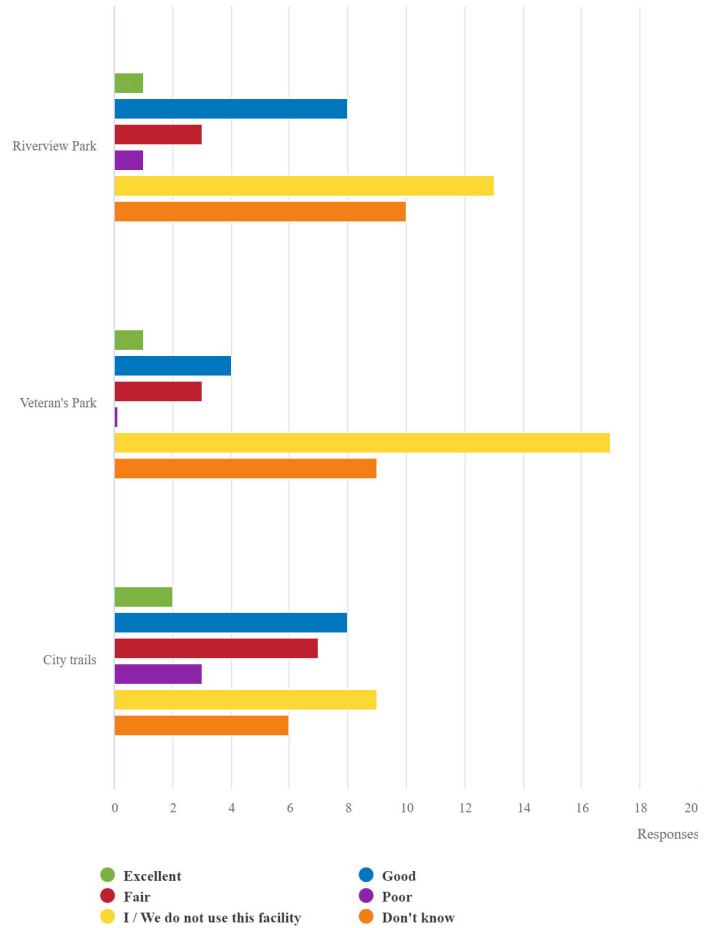
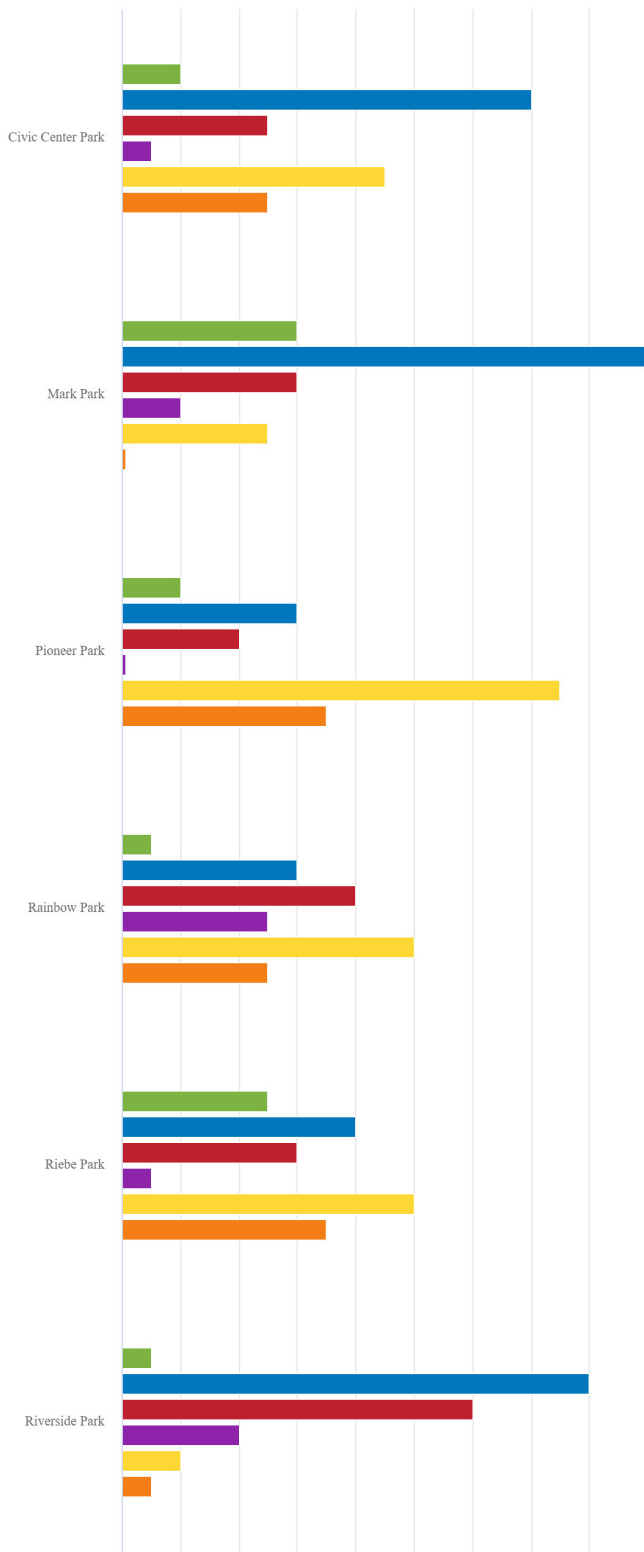
- Walking and biking trails
 - Picnic shelters
 - Kayak / Canoe launch
 - Baseball / Softball fields
 - Outdoor basketball
 - Outdoor volleyball court
 - Pickleball court
 - Off-leash dog park
 - Playgrounds
- ▲ 1/3 ▼

ONLINE ENGAGEMENT FINDINGS

SURVEY #2

Q4. If you answered yes, please rate the condition of the parks or facilities that you visit in Princeton.

39 answers



ONLINE ENGAGEMENT FINDINGS

SURVEY #2

8. What other park or recreational area (anywhere) have you visited that you really enjoyed and what it made it so appealing?

answers

- A new experience park.. like French lake park in Plymouth for example. Something different than any other park. Something for activity in the winter or colder months.
- Becker City Park. Every part of it is very well maintained. Ellison Park in Monticello is also very maintained. Note, these are our grandchildren's favorite parks. They prefer them over our parks.
- Bike trails in elk river
- Cleanliness is always an important part - and that includes garbage receptacles being emptied regularly rather than overflowing. Walk into Mark Park and there are two and often both are overflowing. Trash laying around just as is true elsewhere in the community when I walk - and that's everywhere, everywhere - even on the main street. It's as if no one even cares how the whole community appears. Drive or walk First Street and it's littered with trash - lawns overgrown - a real mess and there's constant traffic. What sort of impression is this leaving??? It's not just our parks but the whole town is littered with trash - papers, plastic bags, bottles, cans, areas full of cigarette butts, fast food boxes, etc. Walking past the cemetery makes one cringe as it's a total disaster - papers/bags all around, street signs leaning over, the fence area not weed wacked, and I've actually had people stop me and comment on how pathetic the cemetery appears.
- Clifton French Regional Park in Plymouth. Activities for every age group, very clean, and well maintained. Central Park in Maple Grove has a lot of variety, activities for all age groups, clean, and well maintained.
- Elk river bike park and trails, we go to Elm Creek a lot in maple grove for bike trails, park and swimming area. Skating loop in the winter.
- Elk River Orano Beach. Has a nice bike/skate board ramp area, updated bathrooms and a free splash pad as well as a nice trail that has some interactive signs supported by their local library.
- Elm creek, shoreview, Hugo. Any playground that was built within the last 2-4 years. Sauk Centre.
- Grand rapids for the long paved bike paths. Maple Grove in winter for skiing and snow tubing.
- I love having hiking trails or bike trails
- Kiwanis park in Brainerd MN is good because it has a good fishing Pier that's easily accessible to handicapped or elderly people. It is also in an area where you can actually catch a fish.
- None really. They are grimy and unkept mostly. Kids starting fires, wood chips not kept up, rough surfaces.
- Paved trails are very appealing. We go to springvale Park in Isanti County specifically for the trails.
- Princeton school playground. Mostly up to date, taken care of, little to no graffiti etc.
- Recreation Park in Milaca, MN. It's free, has numerous activities, has activities for all ages, and is connected to a huge set of trails
- Springvale park in Cambridge is our favorite because it has a long paved trail, plus more well-maintained gravel trails. They also just put in some fitness stops along the paved trail!
- The Eagan community center has a beautiful space with a community center, a pond, trails, playgrounds, an amphitheater...it's an incredible space.
- The luce line trail in hutchinson is what I grew up on. It was heaven.
- The Milaca parks both with the ninja themed course and by the softball fields have really improved both in cleanliness and variety of offering.
- Wheelchair accessible playgrounds
- Woodland trails in Elf River has an extensive and accessible trail system. I also use the new Nature play area
- Working splash pads, playgrounds geared toward older children, nature parks like woodland park in elk river and paved paths.

ONLINE ENGAGEMENT FINDINGS

SURVEY #2

Q9. What recreational element(s) could be added to make the parks in Princeton more unique or fun?

22 answers

- Activities for all age groups. More paved trails. Fully functional splash park.
- A natural playground would be great especially with a water feature More biking trails
- A nature playground like woodland park in elk river.
- Cleanliness
- Connecting trails or longer bike/walking paths.
- Connect the bike trail from Zimmerman to Milaca
- Different frisbee golf courses at other parks so people have other options without having to travel out of town.
- Free splash pad and skate board bike ramps.
- Free splash pad, ninja course, skateboard park. Zip lines.
- Highlight the parks in the FB pages
- I'll leave that to the younger folks. I use them for family picnics and a walking area - the walking/bike paths aren't viable for older people being the bicylists, roller bladers, skateboarders, feel the path is just for them and we walkers had best get out of their way. This happened on several occasions so have stopped even trying to use the only one closest.
- Interactive activities. Maybe things like more biking trails. Our taxes are outrageous, and you don't do the roads, no benefits, so maybe you could actually invest in the community parks and NOT your pockets.
- I think a nice fenced in basketball area by Mark Park like Milaca or becker, the pickleball courts you are putting in and improving the water themed offering at Mark Park. Milaca offers a free version and I think if Princeton is going to charge they should improve, be that a kiddie pool or a full blown pool offering like Mora. We have done outdoor lessons in Mora for years and that is such a nice feature.
- Longer paved loops, make better use of green lake area
- Mark Park splash pad, is a great amenity to the Princeton community. I would love to see it expand and or a community pool.
- More connected trails
- More handicap accessible playground equipment, and more paved trails.
- Outdoor pool with slide, swimming beach, swing sets with adult & me swings, rain gardens with native plants labelled, mini golf, ninja warrior type playground equipment, fruit trees/bushes available for picking, community gardens, bird feeders/ houses, bat houses, wood duck houses, outdoor lookout binoculars, more fishing piers
- Promote the parks with more events: Taste of Princeton. Rum River Festival 5K, Craft Fairs/flea markets, Princeton Farmers Market, Music in the Park(s). Regular Food Trucks area. Any events that draw the community to a park. A Community Pool that serves all ages.
- Skate park, more trails for walking and biking. Swimming area would be a nice feature added for families. A lot of us travel to other communities for a lot of this. We need areas for sledding in the winter besides behind pizza pub.
- Stage of bandshell/amphitheater.
- Wheelchair accessible playground